



Grand Challenges Facing Assessment Practitioners: The Third Millennium

KAREN SINGER-FREEMAN

CHRISTINE ROBINSON

OFFICE OF ASSESSMENT AND ACCREDITATION

Plan for Today

- The Power of Grand Challenges to Drive Progress
- The Process to Identify Grand Challenges for the Assessment Field
- Broadly Supported Grand Challenges for Assessment in Higher Education
- Beginning the Work of National Strategic Planning

The Value

Broad commitment to a grand challenge can:

- Unify and focus efforts
- Support continuous improvement
- Attract public support

Identifying Grand Challenges: The Process

- Identified four characteristics of a Grand Challenge
- Used recent published literature to identify Grand Challenges (10)
- Distributed a survey broadly – newsletters, listservs, emails, etc.
- 230 individuals responded

Top Four Grand Challenges

1. Use assessment findings to increase equity
2. Use assessment findings to direct immediate pedagogical improvements
3. Produce visible and actionable assessment findings that drive innovation
4. Examine changes in institutional effectiveness (including student learning) over time

Supporting Challenges

Increase equity

- Disaggregate data to include important student characteristics.

Immediate pedagogical improvements

- Involve students in authentic self-evaluation of their own learning.

Visible and actionable findings that drive innovation

- Communicate relevant, timely and contextualized information about student learning to stakeholders.
- Use assessment findings to inform budgetary initiatives.

Examine changes over time

- Leverage technology to analyze massive data sets within and across institutions.
- Use ePortfolios to capture students' learning over the entire span of their education.

Current Efforts

Initiation Team

Karen Singer-Freeman,

UNC Charlotte

Christine Robinson,

UNC Charlotte

Gavin Henning,

Past-President, CAS

Jeremy Penn,

Past-President, AALHE

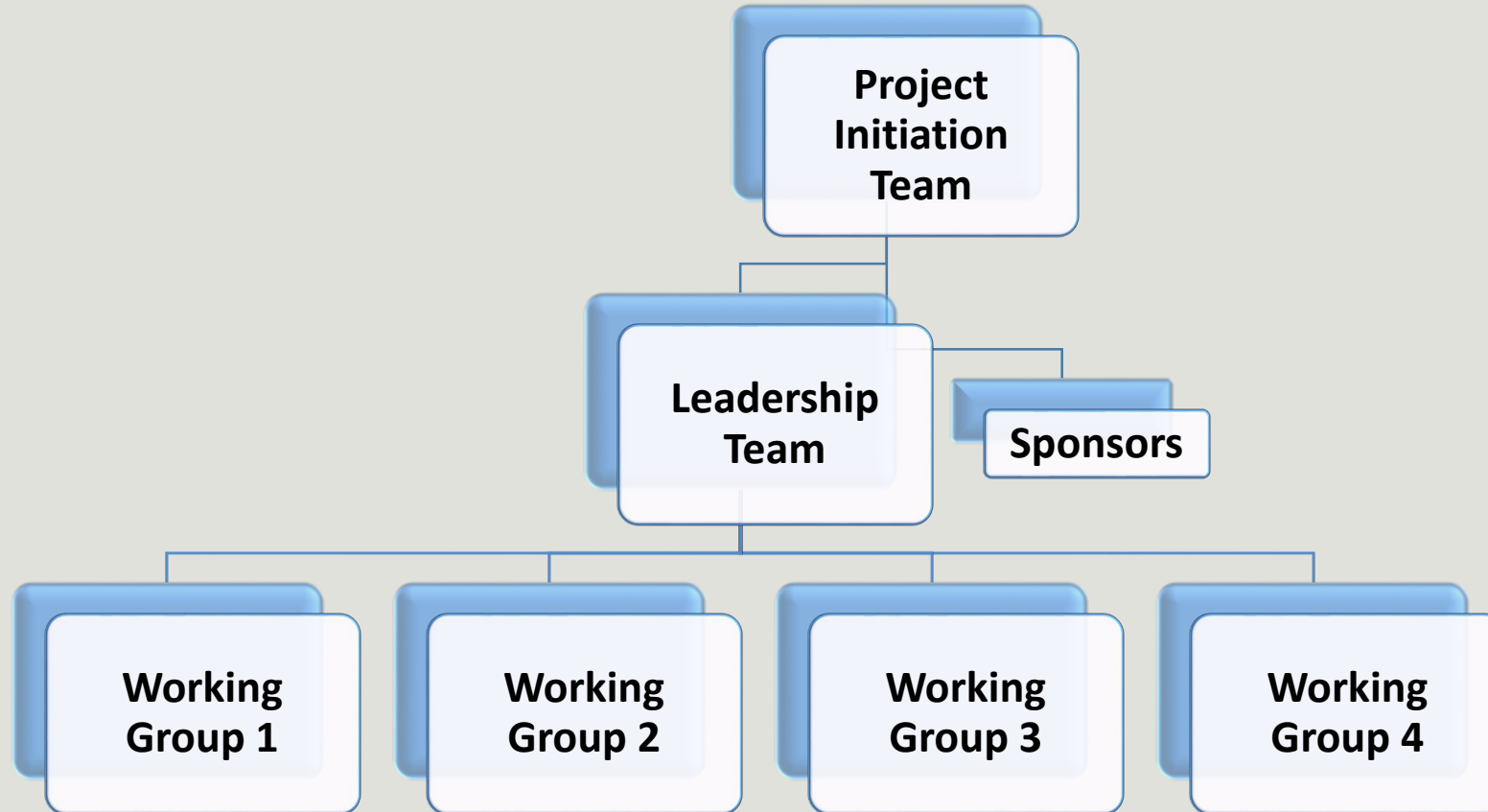
Jane Marie Souza,

President, AALHE

Endorsements

- American College Personnel Association (**ACPA**)
- Association for the Assessment of Learning in Higher Education (**AALHE**)
- Association for Institutional Research (**AIR**)
- Council for the Advancement of Standards in Higher Education (**CAS**)
- IUPUI Assessment Institute
- NASPA, Student Affairs Administrators in Higher Education (**NASPA**)
- National Institute for Learning Outcomes Assessment (**NILOA**)
- Student Affairs Assessment Leaders (**SAAL**)

Organizational Structure



Proposed Timeline

Actions	Target Date
Leadership Team sets operations and expectations	January 2020
Workgroups draft white papers	June 2020
Workgroups draft strategic plans	October 2020
Leadership Team reviews plans and identifies funding sources and partners	March 2021
Workgroups begin implementation of revised strategic plans	June 2021

Pick a Challenge You Find Compelling

Team members to discuss and record the following:

1. What steps could be taken nationally to address this challenge?
2. How would these national steps lead to local action?
3. Who would need to be involved nationally and locally?
4. What resources would be needed nationally and locally?
5. What are the expected deliverables nationally and locally?

Gallery Walk

Take a group of post-it notes and a pen.

SILENTLY, move around the room to each poster, reviewing your colleagues' responses.

Use the post-it notes to make comments, suggestions for implementation, or ask clarifying questions on the chart paper.

Try to review/visit as many charts as possible.

The goal is to provide ideas/actionable feedback to colleagues.

Questions
