

Trends in Student Affairs Assessment: Practical Decision Support for Higher Education

A. Katherine Busby, The University of Mississippi
Robert W. Aaron, Northwestern University

Overview

- Past, Present and Future
- Elements of Student Affairs Assessment Practice
 - Better
 - Best
 - Emerging





ASPECTS FROM THE PAST and PRESENT

Satisfaction

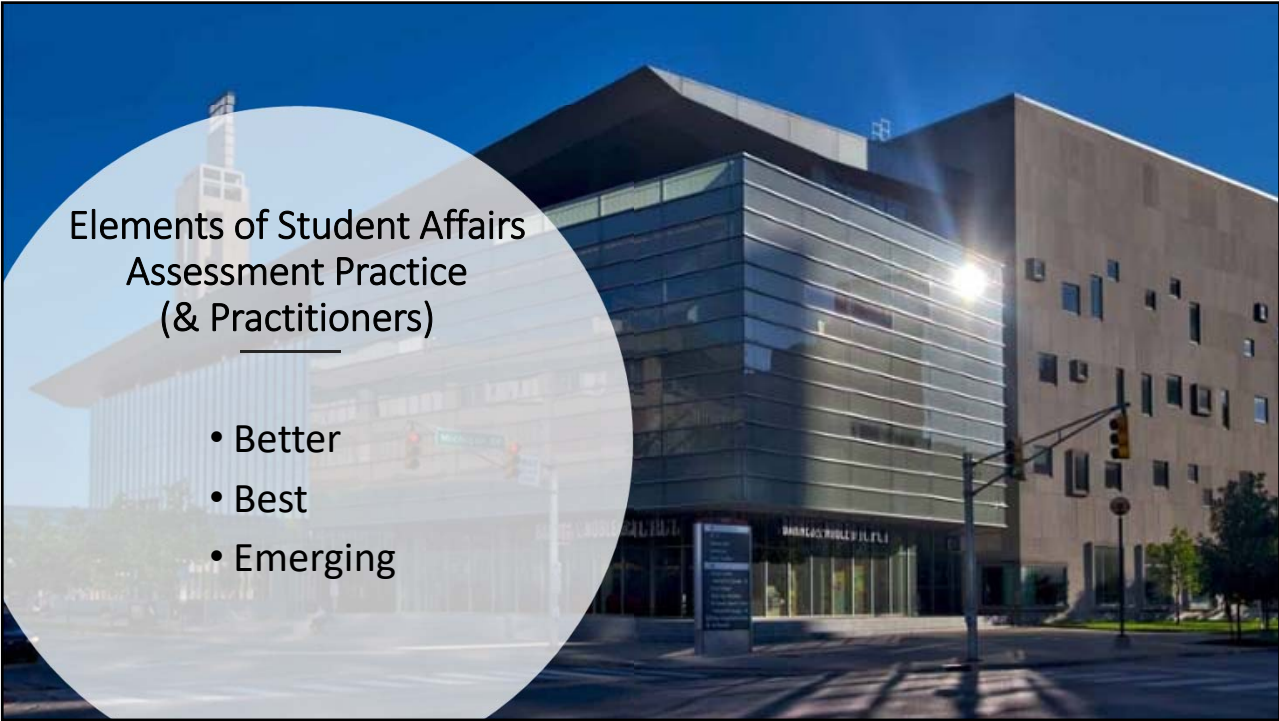
Assessing the whole student

Participation

Student development

Justification of existence

Learning



Better Practices



Staff time devoted to assessment in student affairs



Office of Student Affairs Assessment

Best Practices



Ongoing professional development for assessment

- SA Assessment Conferences
- Presence at national conferences
- Changing needs in the profession



Partnerships with:

- Institutional Research
- Faculty/Schools

Emerging Practices

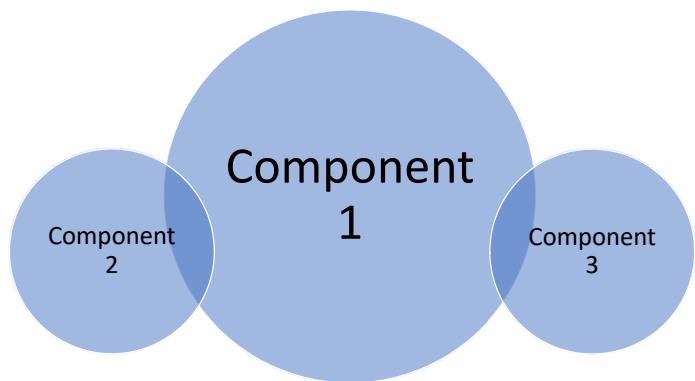


Data visualization

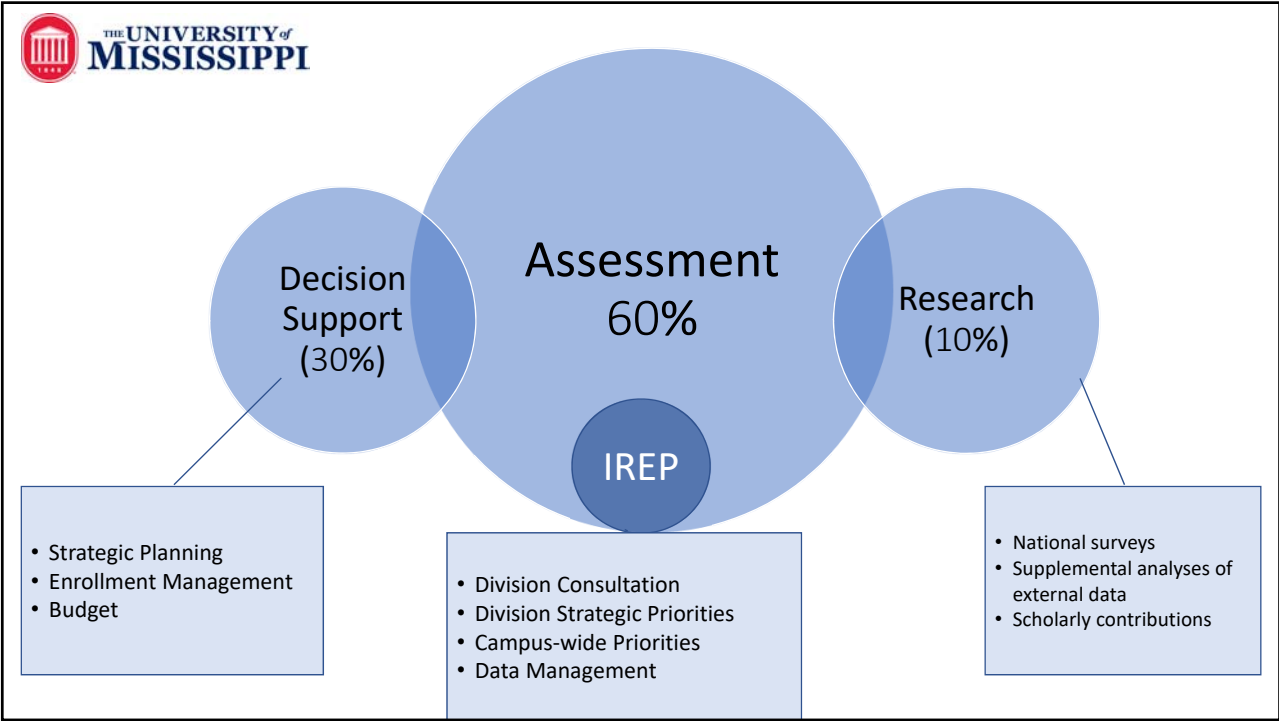
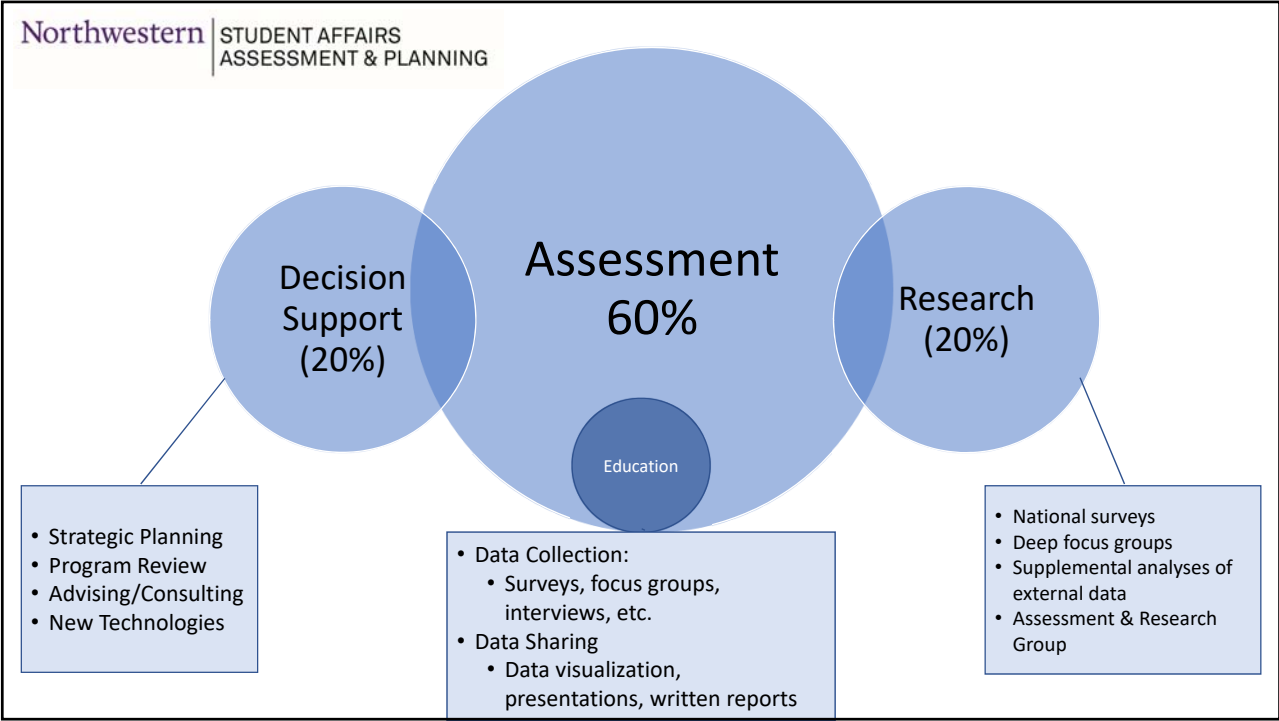


Deeper dives into complex datasets

What's your portfolio for
Student Affairs Assessment?

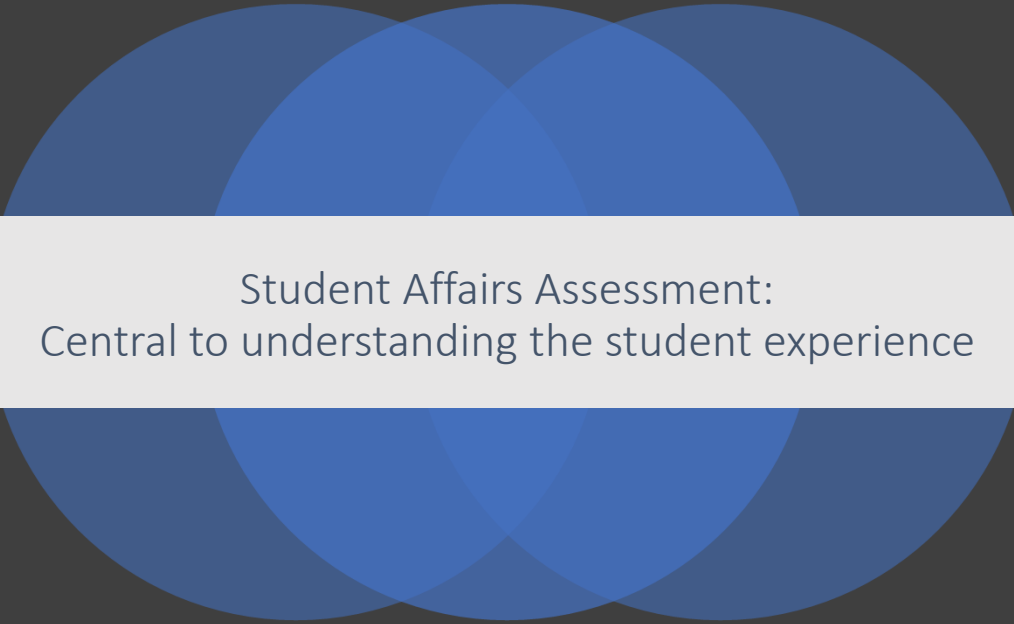


Student Affairs Track Keynote Address at Assessment Institute in Indianapolis



Leadership in Decision Support

- Using data results
- Balancing assessment & research
- Routine schedule of sharing results
- Linking data sources by concept
- Connecting to practical implications



Student Affairs Assessment:
Central to understanding the student experience