

The Next Generation of Learning Outcomes: *Meeting our Students' and Society's Pressing Needs*

DR. DIVYA BHEDA, SHE/HER(S)

DIRECTOR OF EDUCATION AND ASSESSMENT @ EXAMSOFT

DIVYABHEDA@GMAIL.COM / DBHEDA@EXAMSOFT.COM

MODERATOR: DR. MATT G. MUTCHLER, (HE/HIM/HIS)

DIRECTOR OF ASSESSMENT & PROFESSOR OF HEALTH SCIENCE, DIRECTOR OF URBAN COMMUNITY RESEARCH CENTER

CSU DOMINGUEZ HILLS

Context Setting



VALUE Outcomes & Rubrics

<https://www.aacu.org/value-rubrics>

Shopping Cart:

- [Download Instructions \(pdf\).](#)
- [Obtain All 16 Rubrics \(pdf\).](#)

If you experience any difficulty downloading the rubrics, please contact support@aacu.org

Intellectual and Practical Skills

- [Inquiry and analysis](#)
- [Critical thinking](#)
- [Creative thinking](#)
- [Written communication](#)
- [Oral communication](#)
- [Reading](#)
- [Quantitative literacy](#)
- [Information literacy](#)
- [Teamwork](#)
- [Problem solving](#)

Personal and Social Responsibility

- [Civic engagement—local and global](#)
- [Intercultural knowledge and competence](#)
- [Ethical reasoning](#)
- [Foundations and skills for lifelong learning](#)
- [Global learning](#)

Integrative and Applied Learning

- [Integrative learning](#)

[Access Rubric](#)

[VALUE Ir](#)

[Current VAL](#)

[VALUE R](#)

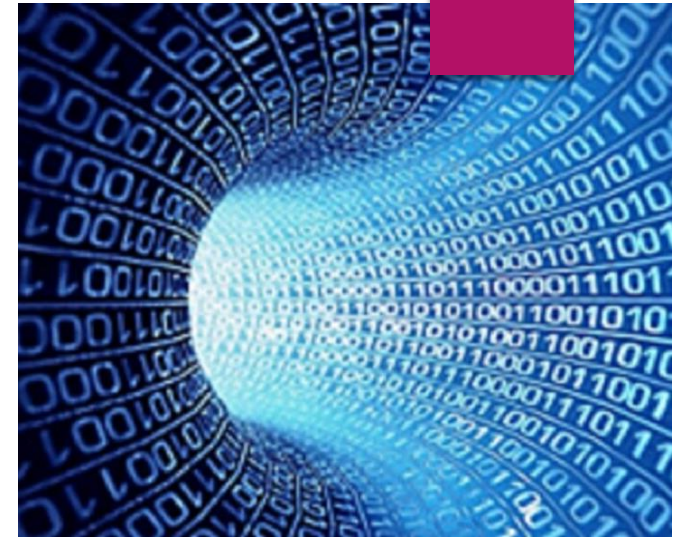
[Current VAL](#)



My
Offerings:
The why

Personal Data Management Skills

- ▶ Identity
- ▶ Privacy
- ▶ Organizational skills
- ▶ Anything else?



Financial Literacy

- ▶ Savings & Emergencies
- ▶ Insurance
- ▶ Loans
- ▶ Growing your money
- ▶ Taxes
- ▶ Anything else?



Networking Skills

- ▶ Ability to present self & ideas
- ▶ Build relationships
- ▶ Ask for what you want
- ▶ Connect across all traditional barriers
- ▶ Anything else?



Conflict Resolution/Management Skills

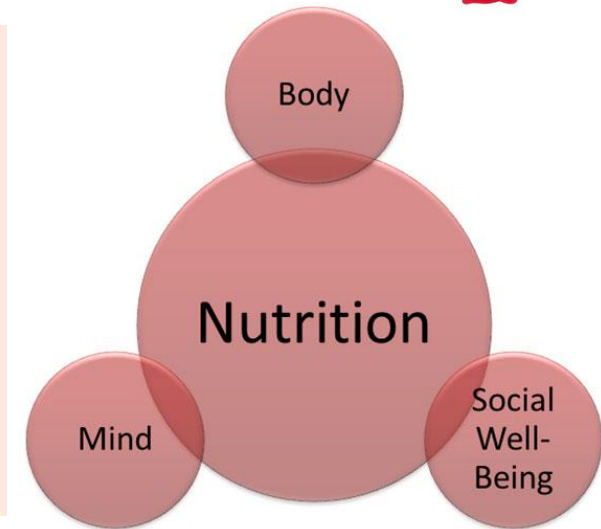
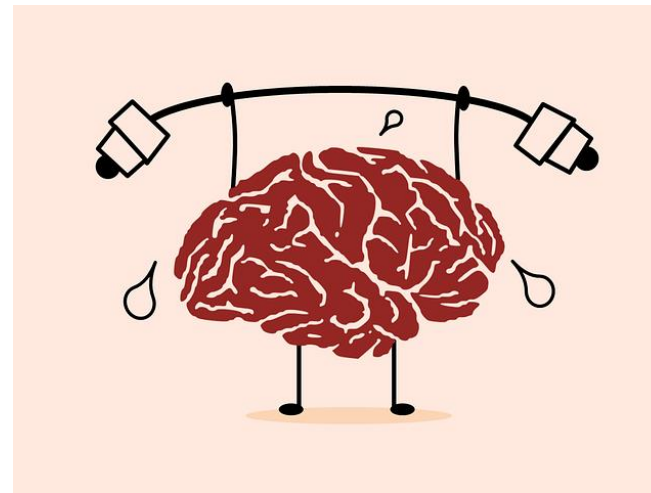
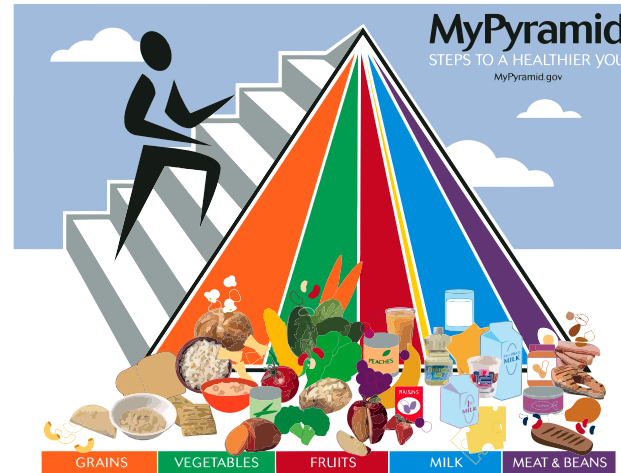
- ▶ Psychology of conflict
- ▶ Alternate dispute resolution
- ▶ Intention vs. impact
- ▶ Restorative and trauma-informed practices
- ▶ Self-awareness triggers
- ▶ Anything else?

- Psychology of conflict
- Alternate dispute resolution
- Intention vs. impact
- Restorative and trauma-informed practices
- Self-awareness triggers
- Anything else?



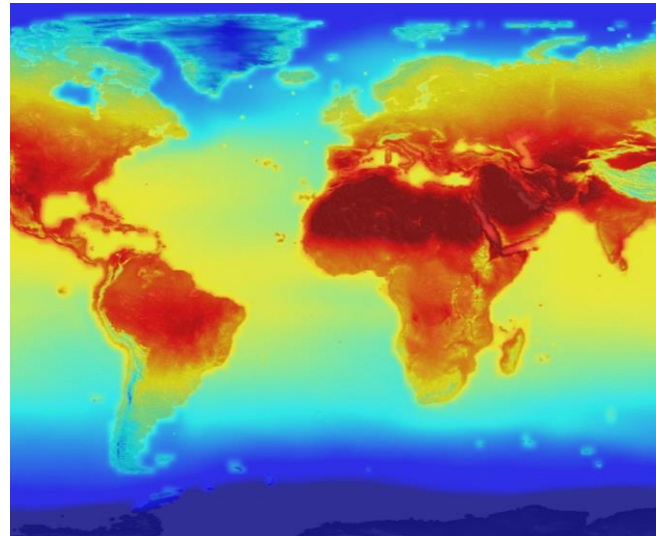
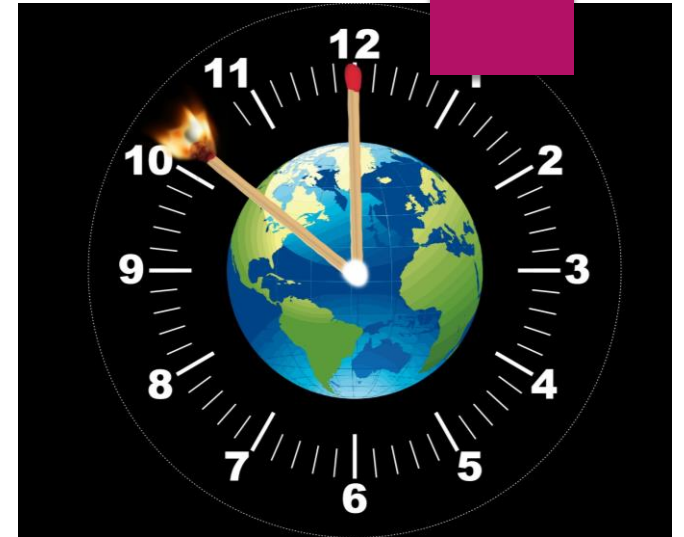
Health Literacy

- ▶ Physical
- ▶ Mental
- ▶ Psychosocial
- ▶ Emotional
- ▶ Spiritual
- ▶ Stress
- ▶ Relationships
- ▶ Self-awareness & regulation
- ▶ Anything else?



Environmental Literacy

- ▶ Interconnectedness & Impact
- ▶ Individual action
- ▶ Corporate accountability
- ▶ Decolonizing approaches
- ▶ Anything else?



Human Rights Literacy

- ▶ Legal knowledge
- ▶ Global knowledge
- ▶ Interconnectedness of society
- ▶ Current local and global news and issues
- ▶ Anything else?



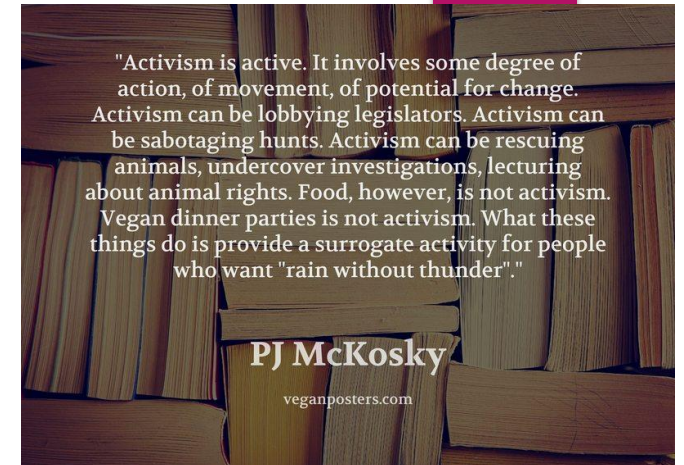
- ▶ Values
- ▶ Principles
- ▶ Theories
- ▶ Personal is political
- ▶ Reflexivity
- ▶ Anything else?



Know It, Understand It, Recognize the Need
Support It!!

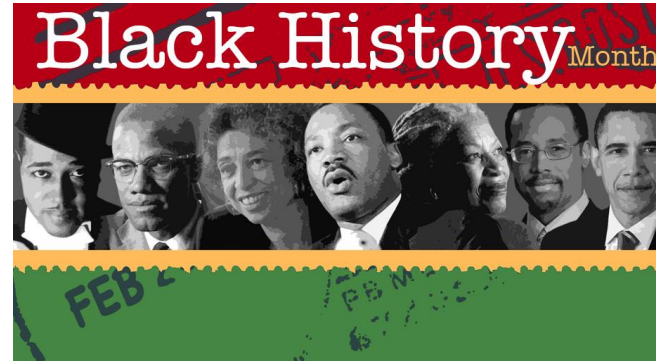
Activism and Advocacy Skills

- ▶ Influence
- ▶ Mobilization
- ▶ Creative solutioning
- ▶ Research & investigative skills
- ▶ Act for Impact
- ▶ Anything else?

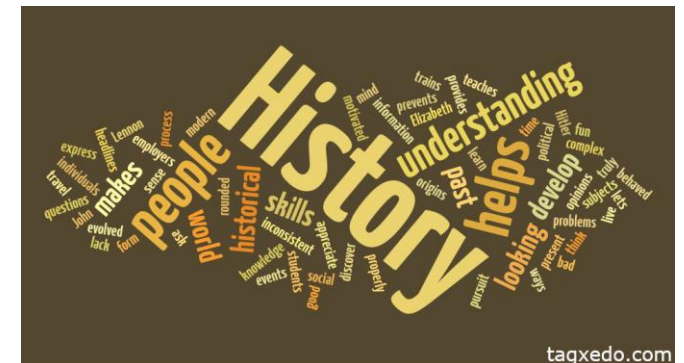


His/Her/They- Storical Literacy

- ▶ Knowledge of what happened
- ▶ Exporation of why it happened
- ▶ Apply it to current and future contexts
- ▶ Recognize mis/disinformation
- ▶ Anything else?



STORIES UNTOLD





divyabheda@gmail.com; dbheda@examsoft.com
LinkedIn:/divyabheda

IUPUI Assessment
Institute
Oct 2021

13:02:03 From Divya Bheda to Everyone:
testing

13:14:56 From Matt Mutchler to Hosts and panelists:
feel free to enter questions here and I will try to answer or ask Divya to answer

13:16:18 From Noemi SaDiablo to Everyone:
yes

13:16:20 From Katrina Bradley to Everyone:
hello

13:16:21 From Angie Welshimer to Everyone:
Hello all

13:16:21 From Sarah Wehner to Everyone:
Hello!

13:16:24 From Fiona Chrystall to Everyone:
hello!

13:16:42 From Candice Calhoun-Butts to Everyone:
Hello from Texas!

13:16:57 From Matt Mutchler to Hosts and panelists:
Hi everyone :)

13:17:40 From Steve Popple, Knowledge Management, Gateway CTC to Everyone:
Greetings from Kentucky/Greater Cincinnati!

13:17:44 From Laura Sear to Everyone:
Hi from Milwaukee!

13:18:02 From Matt Mutchler to Hosts and panelists:
hello from Twain Harte California !

13:18:30 From Irene Lee to Everyone:
Hi from California!

13:18:43 From Mary Simms (she/her) to Everyone:
Hello!

13:18:58 From Patricia Sanders to Everyone:
Good afternoon from Tennessee

13:19:09 From Denise Vandeville to Everyone:
Hello from the Upper Peninsula of Michigan!

13:19:30 From Ruth Haller to Everyone:
Ooh, Denise, jealous! Where?

13:20:16 From Denise Vandeville to Everyone:
Hancock,MI Finlandia University

13:20:28 From Kerry to Everyone:
can you put a link in the chat?

13:20:36 From Denise Vandeville to Everyone:
Light green

13:20:40 From Ruth Haller to Everyone:
I'm also on Zillow looking at land in the UP. I'm from Henry Ford College in Dearborn, MI!

13:20:46 From Patricia Sanders to Everyone:
Please put link in the Chat

13:21:03 From Divya Bheda to Everyone:
www.pollev.com/divyabheda133

13:21:13 From Kerry to Everyone:
thank you!

13:23:39 From Susan Wolcott to Everyone:
I keep miss-typing the pollev address, so I've given up! (We can't copy the address from your chat post... ☹)

13:23:46 From Fiona Chrystall to Everyone:
disco???? :-)

13:23:59 From Heather Maness to Everyone:
LOL

13:24:00 From Bud Baker to Everyone:
<https://pollev.com/divyabheda133>

13:24:00 From Matt Mutchler to Hosts and panelists:
I wrote disco, disco dancing

13:24:04 From Heather Maness to Everyone:
SHOES!

13:24:10 From Brandi Jones to Everyone:
haha that was discgolf :)

13:24:58 From Fiona Chrystall to Everyone:
Wait - someone was happy to let hope go?

13:25:29 From Matt Mutchler to Susan Wolcott and all panelists:
can you try the app? there is an app you can download on phone for this, too

13:26:25 From Susan Wolcott to Everyone:
@Bud: Thanks for posting! I participated in the last poll.

13:30:20 From Ken ODonnell to Everyone:
This is a good question. Are you aware of institutions that have redesigned their ILOs in response to the pandemic?

13:30:54 From Matt Mutchler to Ken ODonnell and all panelists:
Hi Ken, I am not..

13:31:55 From Heather Maness to Everyone:
aren't we all too exhausted to start a new project?!

13:32:09 From Fiona Chrystall to Everyone:
I think it's a little early yet, but if institutions are currently developing new strategic plans (like we are), this is an opportunity to take a stab at where we need to be going.

13:32:19 From Matt Mutchler to Everyone:
LOL NOT DIVYA

13:32:30 From Fiona Chrystall to Everyone:
Yes, Matt! :-)

13:35:37 From Heather Maness to Everyone:
could sharing and task automation

13:35:39 From Fiona Chrystall to Everyone:
That will keep the IT folks busy!

13:35:43 From Heather Maness to Everyone:
*cloud

13:35:46 From Pamela Ingleton (she/her) to Everyone:
Technologies/systems like blockchain

13:35:56 From Dr. Lina Marie to Everyone:
Data Analytics

13:36:41 From cchaney to Everyone:
data Secruity

13:37:01 From Susan Wolcott to Everyone:

Time management

13:37:03 From Pamela Ingleton (she/her) to Everyone:
basic programming (though I'm not sure that fits here specifically)

13:37:20 From Fiona Chrystall to Everyone:
what constitutes an ethical "digital human" persona in cyberspace? We seem to be disassociating the online presence from the in-person one.

13:38:12 From cchaney to Everyone:
digital courtesy

13:38:13 From Patricia Sanders to Everyone:
I would like the chat emailed to me psander9@utm.edu

13:39:17 From Fiona Chrystall to Everyone:
visual communication

13:39:39 From Sarah Wehner to Everyone:
Email etiquette

13:39:43 From Kerry to Everyone:
joneskl@tiffin.edu

13:39:45 From Matt Mutchler to Everyone:
MMUTCHLER@CSUDH.EDU

13:39:47 From Fiona Chrystall to Everyone:
fionahchrystall@abtech.edu

13:39:49 From Amy Beckman-Executive Director, Career & Experiential Learning to Everyone:
beckmana@mcpherson.edu

13:40:10 From Tammy Salman to Everyone:
salmant@lanecc.edu

13:40:52 From Matt Mutchler to Everyone:
buying property

13:41:12 From Laura Sear to Everyone:
planning for retirement

13:41:14 From Matt Mutchler to Everyone:
Getting a promotion

13:41:28 From Fiona Chrystall to Everyone:
financial wellness is one of the four focus areas of our new strategic plan

13:41:29 From Dr. Lina Marie to Everyone:
investing

13:41:47 From Amy Beckman-Executive Director, Career & Experiential Learning to Everyone:
budget

13:41:59 From Fiona Chrystall to Everyone:
It's not me - yet! But I have things I'll be hanging on the new SP!

13:42:44 From Matt Mutchler to Everyone:
Using coupons and rewards points LOL

13:42:51 From Pamela Ingleton (she/her) to Everyone:
I think it would be valuable to include components that don't put the onus on the individual, but look at structural elements of finances and equity

13:42:55 From Fiona Chrystall to Everyone:
how to access affordable housing (given so many students are not going into well-paying jobs immediately after graduation).

13:43:16 From Susan Wolcott to Everyone:
Teamwork feeds into networking

13:43:18 From Matt Mutchler to Everyone:
Great points!

13:43:25 From Fiona Chrystall to Everyone:
Yes, Pamela - I was thinking about homelessness and affordable housing vouchers, for example.

13:44:11 From Matt Mutchler to Everyone:
Younger folks are very concerned about making it financially and I think networking could be a good strategy

13:44:14 From Heather Maness to Everyone:
social media networking and ePortfolio creation/website presence

13:44:15 From Sarah Wehner to Everyone:
Professional communication as a marginalized individual

13:44:23 From Pamela Ingleton (she/her) to Everyone:
Community-building

13:44:26 From Fiona Chrystall to Everyone:
Networking skills BUT with focus on intended end goal that is tangible~!

13:45:28 From Denise Vandeville to Everyone:
More collaborative opportunities

13:45:40 From Heather Maness to Everyone:
finding both a mentor and a sponsor!

13:45:54 From Fiona Chrystall to Everyone:
Yes, Heather!

13:46:30 From Denise Vandeville to Everyone:
Connecting in real time instead of digital

13:46:37 From Fiona Chrystall to Everyone:
Vouchers for reductions in rent payments don't help if you don't have the \$\$ for the down payment - therefore mentorship/network could play a part here.

13:46:55 From Matt Mutchler to Everyone:
Yes Chrystall!

13:47:26 From Susan Wolcott to Everyone:
nonverbal communication

13:47:38 From Sarah Wehner to Everyone:
@Susan yes!

13:47:52 From Matt Mutchler to Everyone:
emotional regulation

13:48:01 From Denise Vandeville to Everyone:
Spatial relationships within conflict resolution

13:48:19 From Fiona Chrystall to Everyone:
political "correctness" vs transparency - equity will not be achieved by all being "nice" to each other and avoiding any conflicts or controversies

13:48:33 From Denise Vandeville to Everyone:
Physical space

13:48:44 From Heather Maness to Everyone:
be willing to engage with the person and listen to their perspective
searching for common ground

13:49:17 From Susan Wolcott to Everyone:
openness vs. self-protection

13:49:53 From Matt Mutchler to Everyone:
Someone I admire a lot called this "brave safe spaces"

13:50:09 From Fiona Chrystall to Everyone:

yes - I've heard that too, Matt.

13:51:01 From Denise Vandeville to Everyone:
I totally understand!!

13:52:01 From Fiona Chrystall to Everyone:
openness to exploration of new things and ideas, as Susan said.

13:52:38 From Dr. Lina Marie to Everyone:
Congrats!

13:52:50 From cchaney to Everyone:
Seeking to understand another's point of view

13:53:04 From Steve Popple, Knowledge Management, Gateway CTC to Everyone:
Congratulations!

13:53:07 From Matt Mutchler to Everyone:
Yes good points, being open and really listening to others ideas

13:53:22 From Ken ODonnell to Everyone:
willingness not to be the main or last one to speak

13:53:33 From Dr. Lina Marie to Everyone:
socio-emotional learning

13:53:43 From Dr. Lina Marie to Everyone:
social**

13:53:52 From Susan Wolcott to Everyone:
There is current controversy about pay rates for "disabled" people.

13:54:01 From Fiona Chrystall to Everyone:
IUPUI should have built in "walking sessions" to the program!

13:54:05 From Heather Maness to Everyone:
parent caring and palliative care

13:54:13 From Ruth Haller to Everyone:
How to assess spiritual health at a college level?

13:54:47 From Fiona Chrystall to Everyone:
mental health and stress are huge now

13:55:15 From Fiona Chrystall to Everyone:
We give you grace!

13:55:23 From Pamela Ingleton (she/her) to Everyone:
social determinants of health

13:55:40 From Matt Mutchler to Everyone:
Yes grace is so important; I try to assume everyone is struggling inside

13:55:41 From Denise Vandeville to Everyone:
Health Literacy makes me think about Death Literacy...a topic rarely
discussed with youth in USA

13:55:51 From Dr. Lina Marie to Everyone:
meditation

13:56:04 From Teresa Reed to Everyone:
Critical self-reflection

13:56:05 From Fiona Chrystall to Everyone:
So true, Denise.

13:56:28 From Ruth Haller to Everyone:
Thank you

13:56:45 From Susan Wolcott to Everyone:
Good resources:
<https://www.mayoclinic.org/healthy-lifestyle/consumer-health/in-depth/mindfulness-exercises/art-20046356>

13:57:13 From Matt Mutchler to Everyone:
Thanks Susan!

13:57:20 From Dr. Lina Marie to Everyone:
^^Thanks, @Susan!

13:57:43 From Dr. Lina Marie to Everyone:
Green business

13:57:50 From Dr. Lina Marie to Everyone:
sustainability

13:57:51 From Fiona Chrystall to Everyone:
Right in my wheelhouse as an environmental science. This is SO needed!

13:57:56 From Matt Mutchler to Everyone:
Reminded me to stand up LOL

13:57:58 From Denise Vandeville to Everyone:
denise.vandeville@finlandia.edu

13:58:14 From Dr. Lina Marie to Everyone:
environmental justice

13:58:17 From Tammy Salman to Everyone:
Sustainability (environmental, fiscal, etc.)

13:58:43 From Fiona Chrystall to Everyone:
Env justice was born out of social justice, so it makes sense that these are both tackled with immediacy.

13:59:08 From Dr. Lina Marie to Everyone:
Agreed, @ Chrystall and @ Tammy

13:59:25 From Fiona Chrystall to Everyone:
Having taught this for decades, I continue to be amazed by the lack of connections students/people make between their actions and the various environmental systems of our planet.

13:59:41 From Susan Wolcott to Everyone:
In business, we are transitioning from the term "sustainability (economic, social, environmental) to a broader focus that includes DEI.

14:00:27 From Dr. Lina Marie to Everyone:
Agent Orange and Monsanto too

14:01:05 From Fiona Chrystall to Everyone:
Let's think about use/abuse of water resources (essential element that is the reason we can exist on this planet)

14:01:37 From Fiona Chrystall to Everyone:
Think coffee - where grown, who grows, who profits, who buys?

14:03:25 From Matt Mutchler to Everyone:
knowing your rights as a protestor

14:03:32 From Susan Wolcott to Everyone:
ties to ethics

14:04:47 From Ruth Haller to Everyone:
My question is to what extent should an institution advance an ideological agenda? To what extent does it try to shape students' values and ethics (and perhaps even spirituality?) Some of these outcomes represent pretty specific political stances, for instance. I think any institution will always advance an agenda to some extent, but again, I think these questions are relevant considering some of the outcomes being presented here. To what extent do we tell students what they should think about things through the medium of institutional learning outcomes? Honest inquiry.

14:06:10 From Susan Wolcott to Everyone:
@Ruth: Good points. My biggest concern is to teach students how to conduct research to evaluate alternatives.

14:06:23 From Ruth Haller to Everyone:
Susan, yep, 100%

14:06:23 From cchaney to Everyone:
Activism on the left and right politically

14:07:44 From Steve Popple, Knowledge Management, Gateway CTC to Everyone:
What we decide to speak to and not speak to will send a message even if unintentional.

14:07:49 From Dr. Lina Marie to Everyone:
@ Susan...MediaWise, Media Literacy Project, can assist with these concerns.

14:08:11 From Pamela Ingleton (she/her) to Everyone:
An absence of these types of outcomes is also ideological, and certainly political.

14:08:29 From Denise Vandeville to Everyone:
Good point Pamela

14:08:33 From Matt Mutchler to Everyone:
very interesting Dr. Lina Marie

14:09:14 From Ruth Haller to Everyone:
I agree—ideology is everywhere. I guess how do we decide which ideologies we're going to advance as an institution?

14:09:53 From Fiona Chrystall to Everyone:
vision, mission and values reflection - regularly.

14:10:32 From Ruth Haller to Everyone:
Right, Fiona. And who does that? Ideally the whole institution, right? Faculty, staff, admin, etc.

14:10:46 From Pamela Ingleton (she/her) to Everyone:
Maybe that brings us back to essential skills like critical thinking/reasoning and the outcomes being proposed here are topics or venues for exploration.

14:10:58 From Ruth Haller to Everyone:
Pamela, that makes sense.

14:11:04 From Fiona Chrystall to Everyone:
Yes, Ruth. So important to include the community into which your students are going.

14:11:29 From Ruth Haller to Everyone:
Yes, them too. So coming to agreement on some of the more political-leaning outcomes might be difficult.

14:11:42 From Patricia Sanders to Everyone:
Incredible session!

14:11:46 From Fiona Chrystall to Everyone:
Yes - I don't think anyone is saying this is easy work!

14:11:51 From Matt Mutchler to Everyone:
Thanks everyone!

14:12:06 From Ruth Haller to Everyone:
Thanks, all.

14:12:25 From LaTonya Branham to Everyone:
Thank you!

14:12:30 From Denise Vandeville to Everyone:

Great Session Divya!

14:12:40 From Ken ODonnell to Everyone:

Thank you for a good session.

14:12:40 From Steve Popple, Knowledge Management, Gateway CTC to Everyone:

Thank you for infusing yourself and enthusiasm into the presentation!

14:12:41 From Susan Wolcott to Everyone:

Influence

14:12:47 From Fiona Chrystall to Everyone:

My brain is shot!

14:13:21 From Matt Mutchler to Everyone:

Haha Fiona,

14:13:26 From Debbie Finocchio to Everyone:

Thanks so much for this thought-provoking session!

14:13:40 From Matt Mutchler to Everyone:

Such great ideas from everyone

14:13:43 From Susan Wolcott to Everyone:

yes-influencing people.

14:14:32 From Fiona Chrystall to Everyone:

Thank you, Divya and Matt!

14:14:39 From Gina Pinch to Everyone:

Thank you!

14:14:40 From Pamela Ingleton (she/her) to Everyone:

Thanks for the discussion

14:14:40 From Candice Calhoun-Butts to Everyone:

candicec@uta.edu

14:14:45 From Susan Wolcott to Everyone:

swolcott@wolcottlynch.com

14:14:48 From Dr. Lina Marie to Everyone:

Thanks again!

14:14:49 From Tammy Salman to Everyone:

Thank you for offering such a great presentation and engagement! Maybe next year we will see you in person. :)

14:14:49 From Katrina Bradley to Everyone:

Thank you! Great ideas!

14:14:59 From Susan Wolcott to Everyone:

Thank you